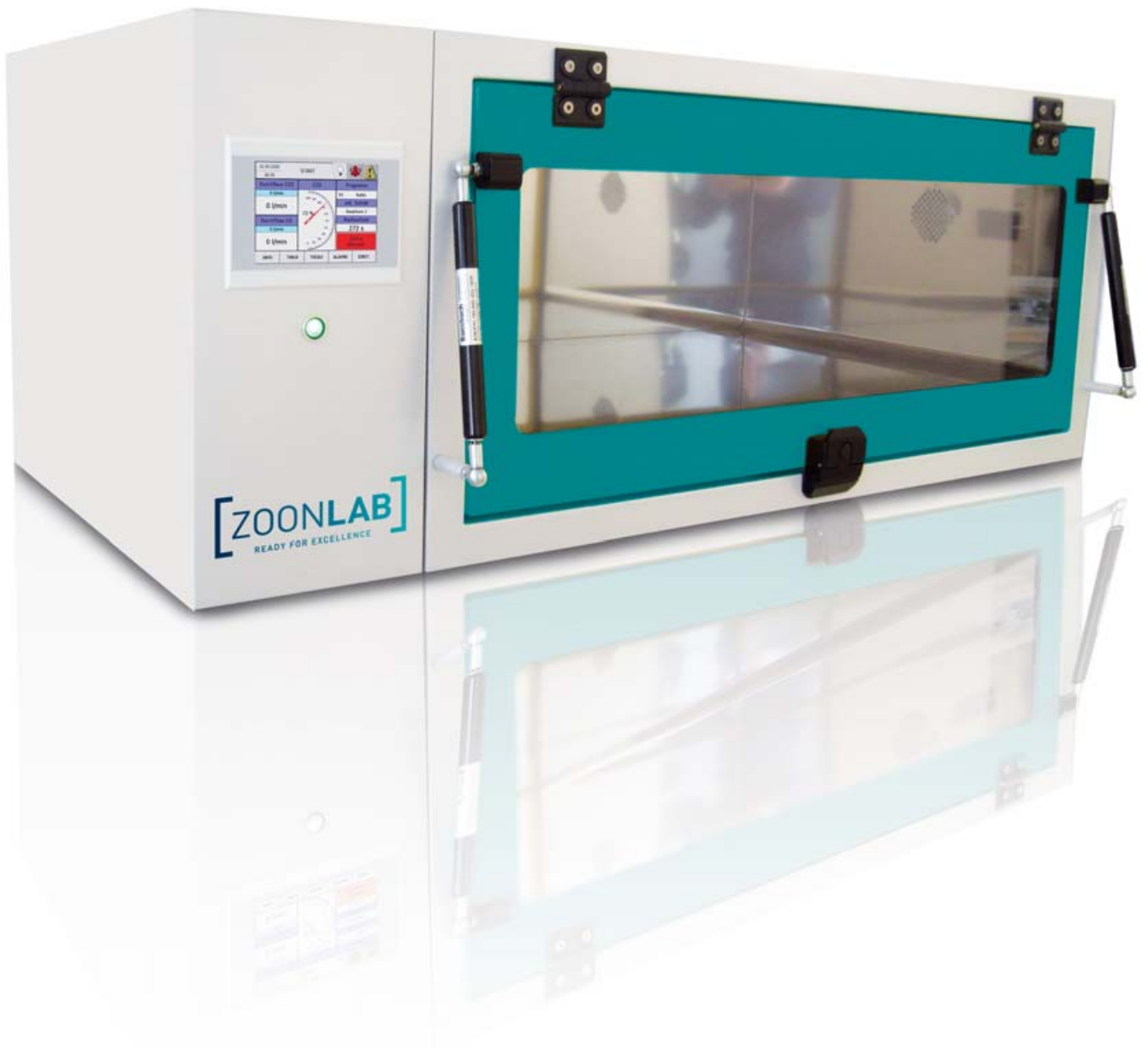


# EXPOSURE LINE – CO<sub>2</sub> BOX

AIR FLOW SYSTEMS

---





## EXPOSURE LINE – CO<sub>2</sub> BOX

Innovation for routine operation and research. The PLC-controlled CO<sub>2</sub> Box, developed by ZOONLAB, permits the application of gases and gas compounds in a reproducible process for the very first time.

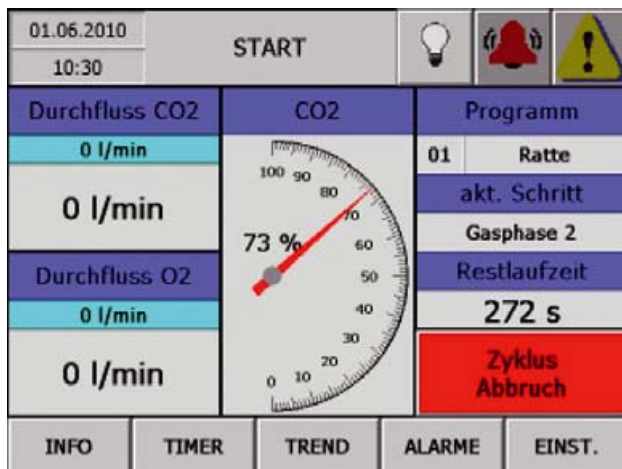
Consequently, the ZOONLAB CO<sub>2</sub> Box meets all established recommendations and statutory provisions for euthanasia of small rodents using CO<sub>2</sub>.

### Function and equipment:

- Programmable mixing ratio of 2 gases
- Programmable volume flow of gas compound
- Programmable time sequences
- Controllable processes
- Easy handling
- High operational safety
- Password-protected operating panel
- Up to 20 customer-specific programmes can be stored alongside the standard programmes
- Trend recording of all processes, displayed by graph
- Scope of delivery does not include the base frame

### Options:

- Base frame



TFT touchpanel home screen



Programme selection

| Cage type          | Dimensions W x D (mm), no hood | Model M, chamber dimensions 600 x 640 x 300 mm (W x D x H), external dimensions 1,000 x 725 x 520 mm (W x D x H), volume 115 l | Model L, chamber dimensions 935 x 640 x 300 mm (W x D x H), external dimensions 1,334 x 725 x 520 mm (W x D x H), volume 180 l |
|--------------------|--------------------------------|--|--|
| 1 L                | 160 x 362                      | 4  | 7  |
| 2                  | 205 x 265                      | 4  | 8  |
| 2 L                | 205 x 365                      | 3  | 6  |
| HRC 500            | 194 x 408                      | 4  | 6  |
| 3 / 3 H            | 265 x 425                      | 2  | 4  |
| 4                  | 380 x 590                      | 1  | 2  |
| Order No.          |                                | 5144501S   | 5144502S   |
| <b>Accessories</b> |                                |  |  |
| Base frame         |                                | 5144506  | 5144504  |

Subject to technical modifications.